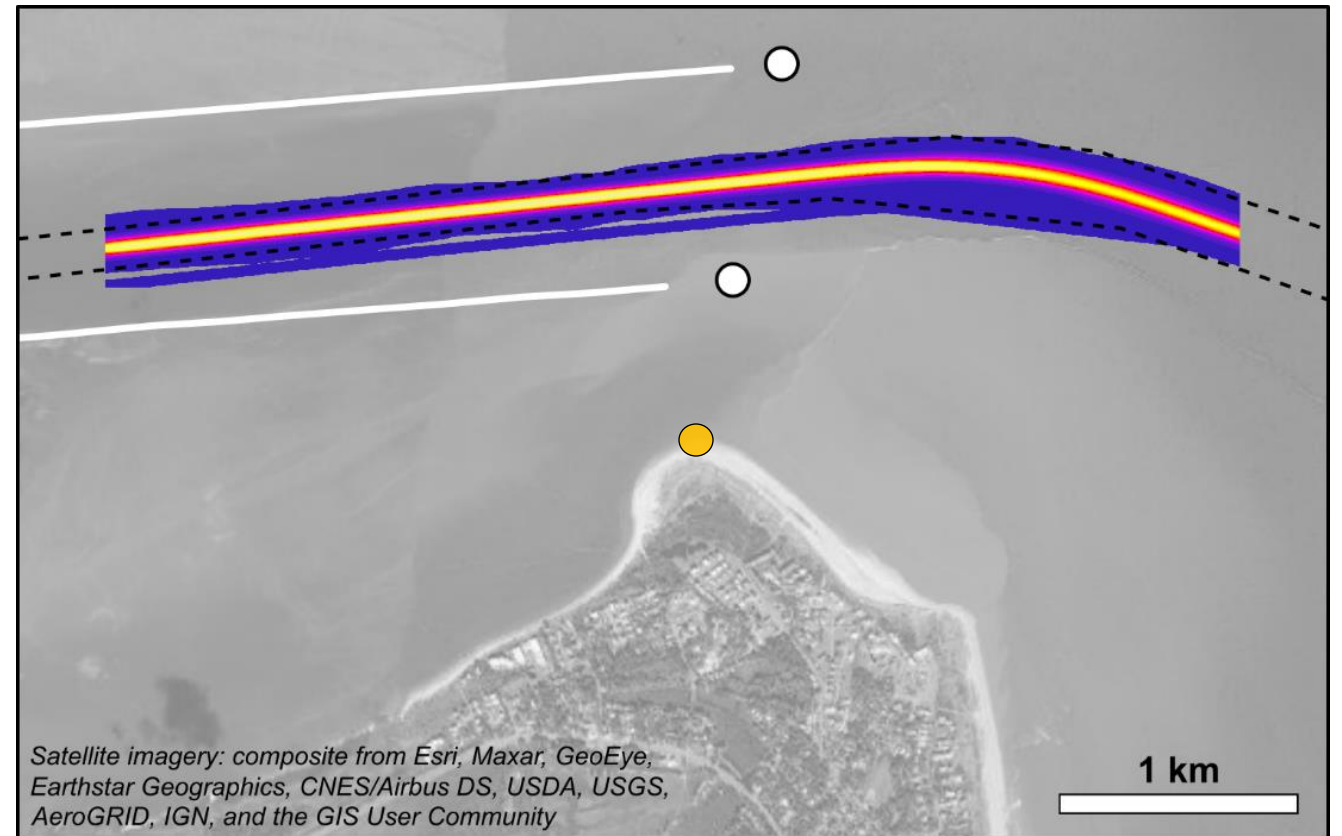


# APPROACH (First study, 2021-2022)

- Field Deployment: (Aug. - Dec, 2021)
  - ✓ Water levels at two offshore stations & beach
  - ✓ AIS to identify vessel passages

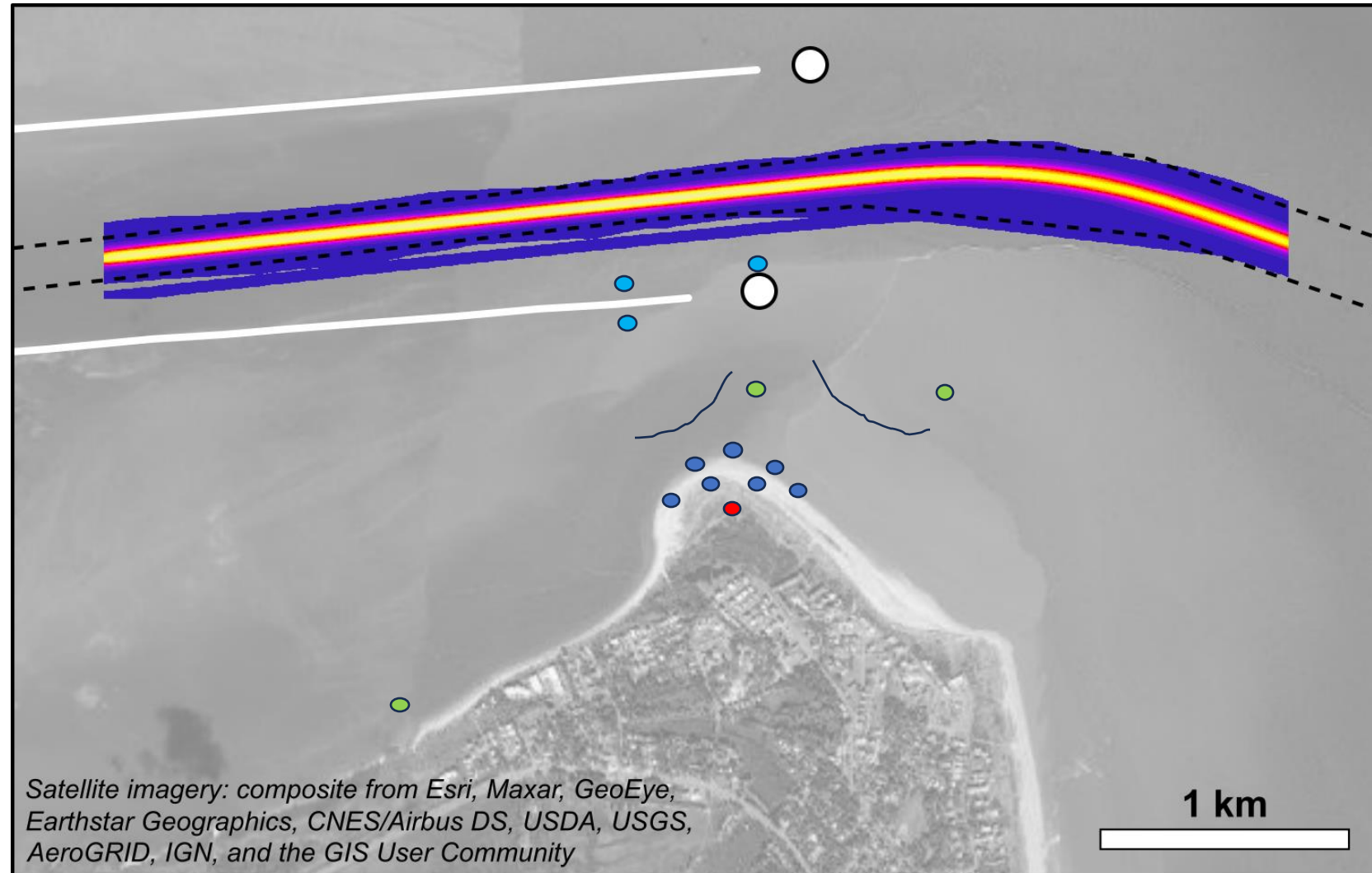


----- Authorized channel boundary

# New Start FY25

## Instrument placements Feb/March 2025

- **Beach**
  - 7 **pressure sensors**, 5 with ADVs
  - 3 **cameras**,
    - 2 - 60 degree facing beach,
    - 1 - 15 degree facing the ship channel.
- **Offshore surface**
  - 1 pressure sensor mounted to range,
  - 1 placed on inside of south jetty
  - 1 placed on outside of south jetty
- **Offshore bottom**
  - 1 AWAC/Signature in south channel measuring water column currents and surface track.
  - 1 offshore of Tybee Point
  - 1 offshore of Tybee Point closer to open coast edge



Fewest ship tracks

Most ship tracks

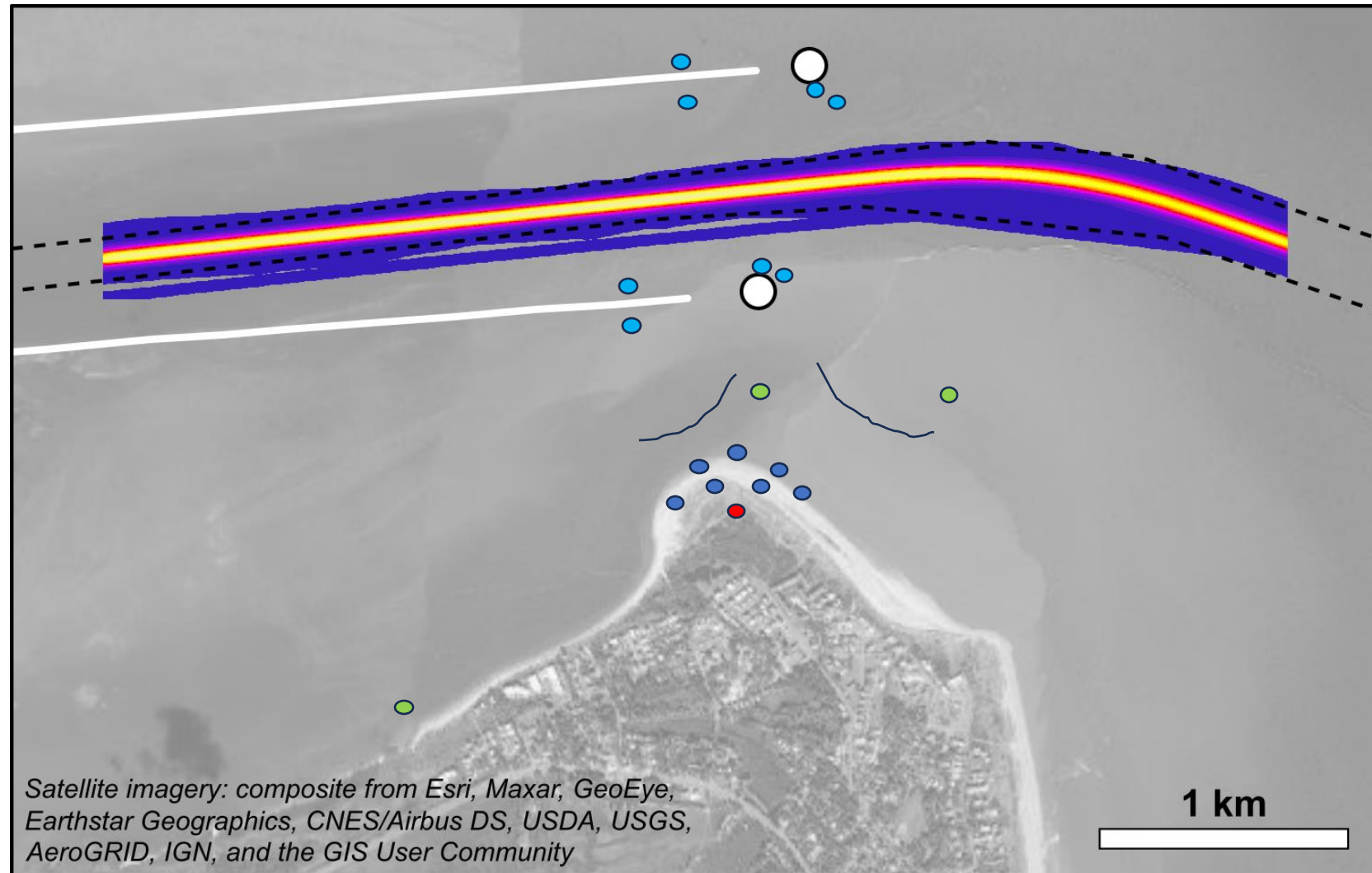


----- Authorized channel boundary

# New Start FY25 ENHANCED

## Instrument placements Feb/March 2025

- **Beach**
  - 11 **pressure sensors**, 5 with ADVs
  - 3 **cameras**,
    - 2 - 60 degree facing beach,
    - 1 - 15 degree facing the ship channel.
- **Offshore surface**
  - 1 pressure sensor mounted to range,
  - 1 placed on inside of south jetty
  - 1 placed on outside of south jetty
- **Offshore bottom**
  - 1 AWAC/Signature in south channel measuring water column currents and surface track.
  - 1 offshore of Tybee Point
  - 1 offshore of Tybee Point closer to open coast edge



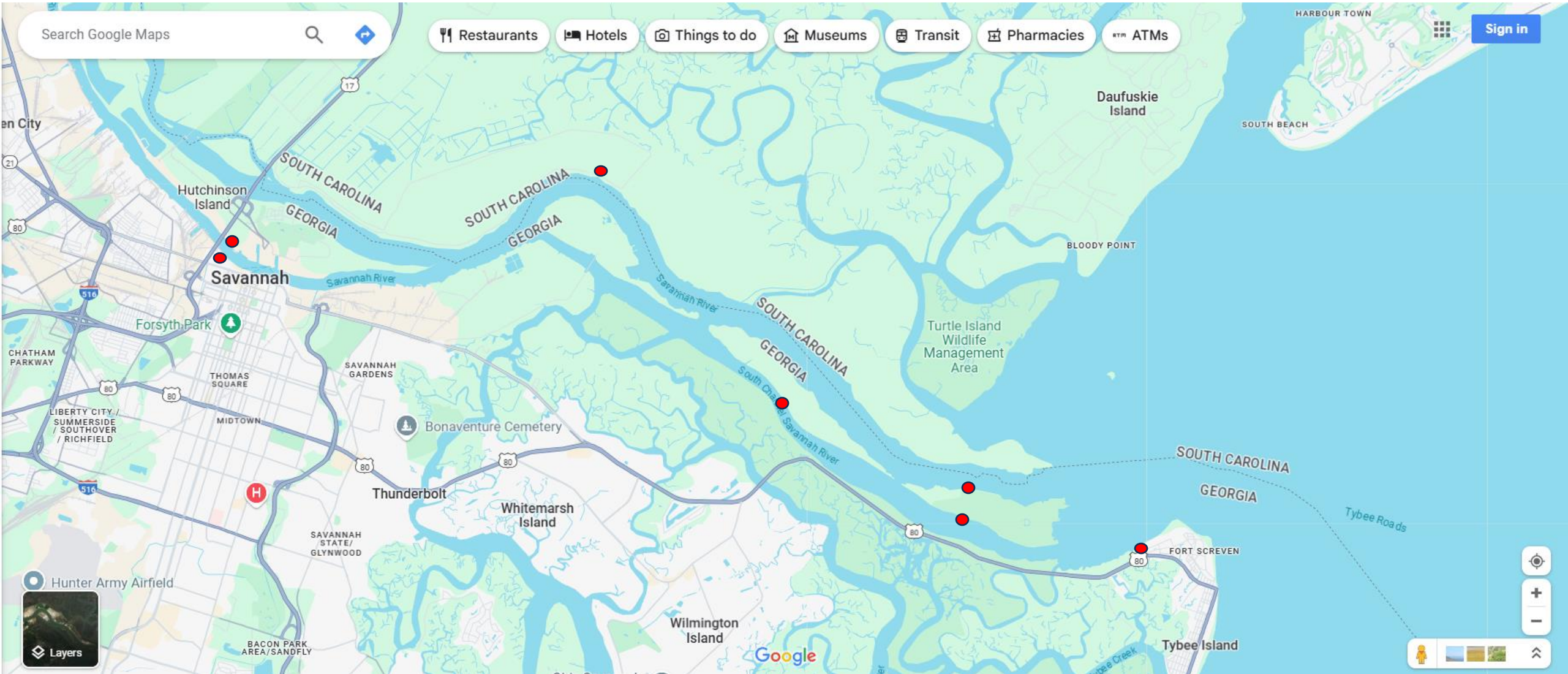
Fewest ship tracks

Most ship tracks



----- Authorized channel boundary

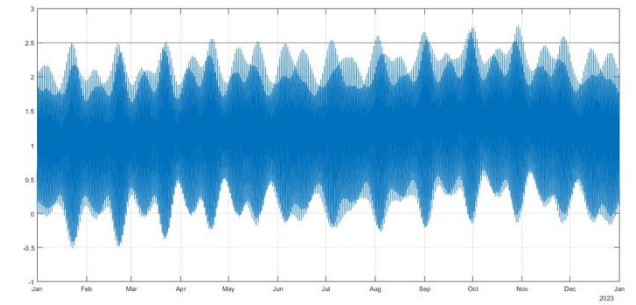
# New Start FY25 Maynard sites



Tybee Island, Ft. Pulaski, Dredge placement, Rt 17 bridge (on both sides)  
Pressure sensors, cameras??, ADVs??

# MOBOTIX CAMERAS

- 2 60-degree wide angle for beach
- 1 15-degree narrow angle for vessel tracking.



Satellite imagery: composite from Esri, Maxar, GeoEye, Earthstar Geographics, CNES/Airbus DS, USDA, USGS, AeroGRID, IGN, and the GIS User Community

LOMA portable tower

